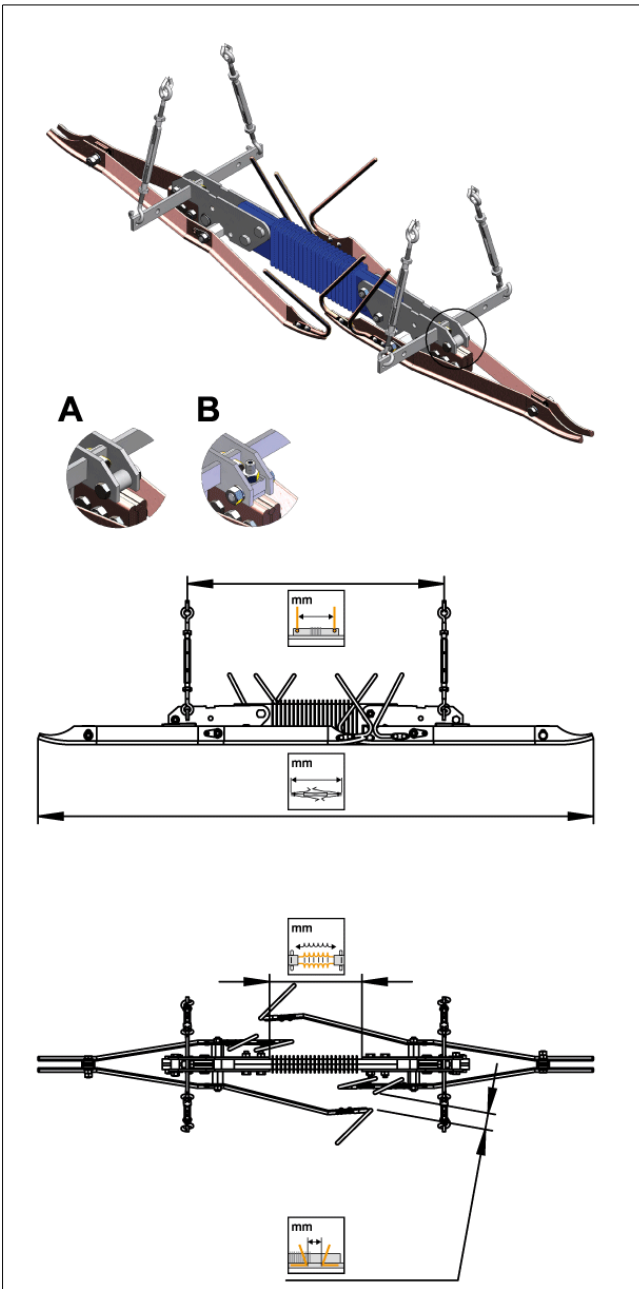


Insulators up to 1.5 kV DC

Type: FD1.5



Material

GRP/Silicone rubber, Cu, CuNiSi, stainless steel

Application

1.5 kV DC Section insulator for tramways.
For speed up to 100 km/h.
SML insulator beam 80 kN.

Remark

- A) Without adjusting screw for contact wire splice
B) With adjusting screw for contact wire splice

Item-no.



Item-no.	mm ²	mm	kN	mm	mm	mm	mm	Kg	
655.336.705	100-152	5.6-6.9	max. 10	450	610	35	1320	13	A
655.336.707	100-152	5.6-6.9	max. 32	450	610	35	1320	13.3	B